



**THE WORLD TO YOUR DOOR**



**URBAN TRUCK BODIES**



# PEKI URBAN



The Peki truck body range completes the final mile from distribution centre to end user, bringing the world to your door. It's a body you can rely on, because it's backed by Australia's largest semi-trailer manufacturer.

Whether you are a single operator or large fleet, Peki Urban provides the ideal solution for pick-up and delivery businesses. With a choice of ambient or refrigerated models, low tare weight and optimised thermal performance are just some of the features that will deliver savings on your bottom line.

## BENEFITS



**Backed by the MaxiTRANS Dealer Network** - now you can have a truck body with the support that your business expects and demands. In combination with MaxiPARTS, MaxiTRANS lays claim to a network of over 30 parts and service locations around Australia, increasing your uptime and profitability. Here for you today and into the future, Peki is the truck body you can trust.



**Excellent thermal performance** - fully bonded construction and composite thermal break technology reduce thermal loss through mechanical fastenings and joints. A fully composite (fibreglass/foam) floor also comes as standard, further maximising thermal advantages.



**Low tare weight** - Peki Urban truck bodies feature a low tare weight starting from just 620kg.



**High productivity** - Peki Urban bodies are designed with maximum internal dimensions, optimising your load capacity.



**Durable** - a stainless steel rear frame and galvanised subframe provide optimum protection from corrosion.



**Easy fitment and maintenance** - all Peki Urban truck bodies are designed with a multi-fit chassis runner for fast installation to all truck makes and models. Additionally, many modular components can be removed or replaced if damaged.



**Extensive options list** - a wide variety of options are available, including various internal body heights as well as side, roller, double and triple rear doors.



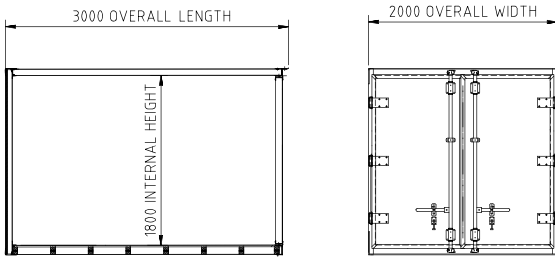
**Two-year warranty** - all Peki Urban bodies are supported by a two-year manufacturer's warranty.

Visit [peki.com.au](http://peki.com.au) to find your nearest dealer and complete your final mile solution.



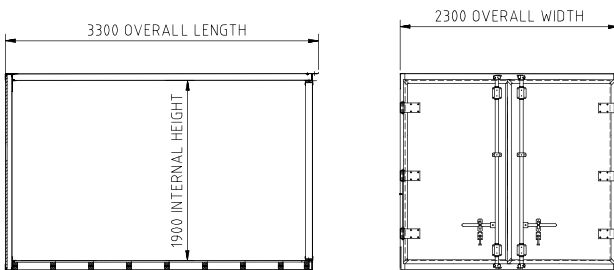
# STANDARD MODELS

## 3.0 METRES



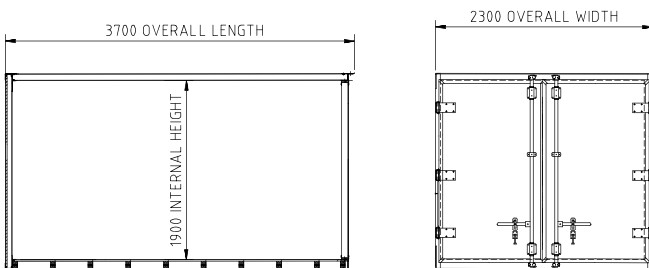
	AMBIENT	REFRIGERATED
<b>Body Dimensions</b>		
Internal Width	1956mm	1860mm
Internal Height	1800mm	1800mm
External Width	2000mm	2000mm
External Length	3000mm	3000mm
<b>Panel Thickness</b>		
Front Wall	18mm	70mm
Side Walls	18mm	70mm
Roof	18mm	70mm
Floor	102mm	102mm
Side/Rear Door	18mm	70mm
<b>Cubic Capacity</b>	<b>10.3m<sup>3</sup></b>	<b>9.5m<sup>3</sup></b>
<b>Tare Weight (kg) (approx.)</b>	<b>740kg</b>	<b>620kg</b>

## 3.3 METRES



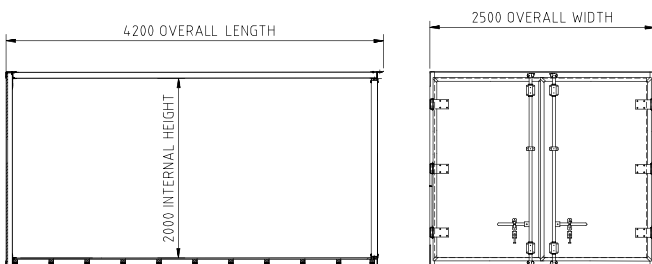
	AMBIENT	REFRIGERATED
<b>Body Dimensions</b>		
Internal Width	2256mm	2160mm
Internal Height	1900mm	1900mm
External Width	2300mm	2300mm
External Length	3300mm	3300mm
<b>Panel Thickness</b>		
Front Wall	18mm	70mm
Side Walls	18mm	70mm
Roof	18mm	70mm
Floor	102mm	102mm
Side/Rear Door	18mm	70mm
<b>Cubic Capacity</b>	<b>13.8m<sup>3</sup></b>	<b>12.9m<sup>3</sup></b>
<b>Tare Weight (kg) (approx.)</b>	<b>800kg</b>	<b>680kg</b>

## 3.7 METRES



	AMBIENT	REFRIGERATED
<b>Body Dimensions</b>		
Internal Width	2256mm	2160mm
Internal Height	1900mm	1900mm
External Width	2300mm	2300mm
External Length	3700mm	3700mm
<b>Panel Thickness</b>		
Front Wall	18mm	70mm
Side Walls	18mm	70mm
Roof	18mm	70mm
Floor	102mm	102mm
Side/Rear Door	18mm	70mm
<b>Cubic Capacity</b>	<b>15.5m<sup>3</sup></b>	<b>14.6m<sup>3</sup></b>
<b>Tare Weight (kg) (approx.)</b>	<b>840kg</b>	<b>720kg</b>

## 4.2 METRES



	AMBIENT	REFRIGERATED
<b>Body Dimensions</b>		
Internal Width	2456mm	2360mm
Internal Height	2000mm	2000mm
External Width	2500mm	2500mm
External Length	4200mm	4200mm
<b>Panel Thickness</b>		
Front Wall	18mm	70mm
Side Walls	18mm	70mm
Roof	18mm	70mm
Floor	102mm	102mm
Side/Rear Door	18mm	70mm
<b>Cubic Capacity</b>	<b>20.2m<sup>3</sup></b>	<b>18.9m<sup>3</sup></b>
<b>Tare Weight (kg) (approx.)</b>	<b>900kg</b>	<b>780kg</b>

Body dimensions can be varied upon request to suit specific requirements. Fully customised truck bodies are available in the Peki Classic model range. Consult your Peki Dealer for more information.



# STANDARD FEATURES AND OPTIONS

## STANDARD FEATURES



2 X LED HIGH LUMINOSITY INTERIOR LIGHTS



FULLY MOULDED MULTI-LIP DOOR SEALS



GALVANISED SUB FRAME



ALUMINIUM NON-SLIP PLATE FLOOR



MOULDED PLASTIC MUD GUARDS



STAINLESS STEEL EXTERNAL LOCK-ROD DOOR HARDWARE

- Your choice of preferred refrigeration plant
- Universal front wall frame to suit off engine drive units
- Multi-fit chassis runner

- Stainless steel door frames
- Double rear doors
- Internal safety door opening (refrigerated only)

- Fibreglass and XPS insulation panels (refrigerated only)
- Fibreglass and honeycomb wall panels (ambient only)
- LED clearance lights

## OPTIONS

- Single opening side door 800mm x full height
- Double opening side door 1300mm x full height
- Triple rear doors
- Fold away access step
- Roller door
- Internal door hardware with quick release handle
- Divider / split temperature
- Insulated loose panel bulkheads

- Internal shelving designed to customer requirements
- Double loader bar system
- Load restraint system
- Tie rail system (ambient only)
- Aluminium scuff bands
- Full width fixed rear access step
- Rubber rear dock buffers
- Additional LED clearance lights

- Additional LED high luminosity interior lights
- Rear work lamp
- Rear vision camera
- Side under run protection
- Toolbox
- Water tank
- Tail lift provisions to customer specification

MaxiTRANS provides the information contained herein in good faith, based upon the right to change specifications without notice. However, MaxiTRANS accepts no liability, either direct or indirect for any loss or consequential loss that may result from the application of this information. Purchasers must conduct their own enquiries to ensure that the products are suitable for their own particular purposes. Any comments made regarding products and construction are made on an information basis, not as a recommendation. Photographs may show equipment that is available at extra cost. The Peki logo is a registered trademark of the MaxiTRANS group. MaxiTRANS Australia Pty Ltd. Copyright 2017. ABN 95 081 151 699. Printed 07/17